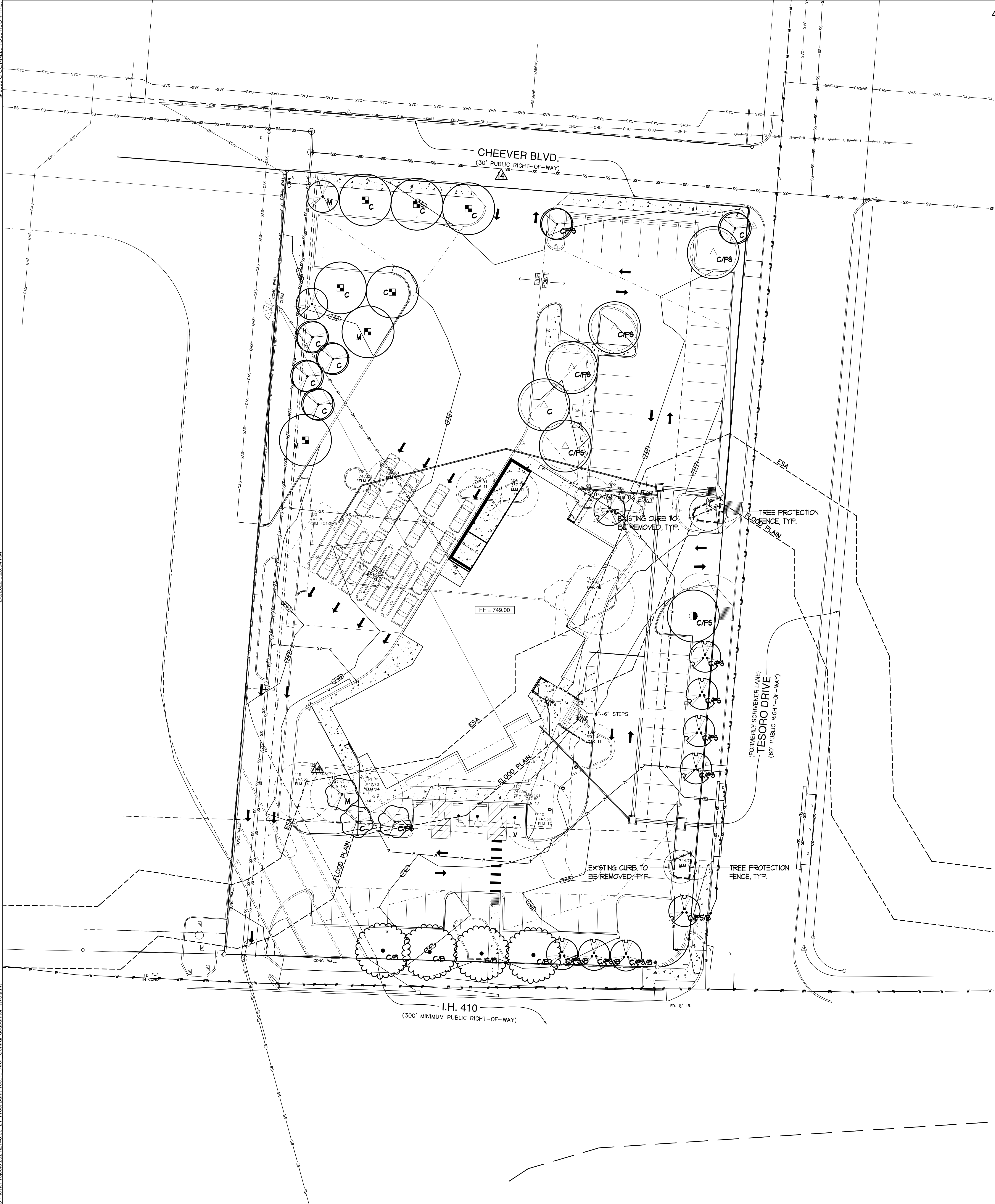


© 2022 O'CONNELL ROBERTSON, INC. 2/8/2022 8:25:54 AM C:\Reel Projects\2021\148.00_21_Frost Bank Tesoro Arch Central.dwg (REVISED) 14

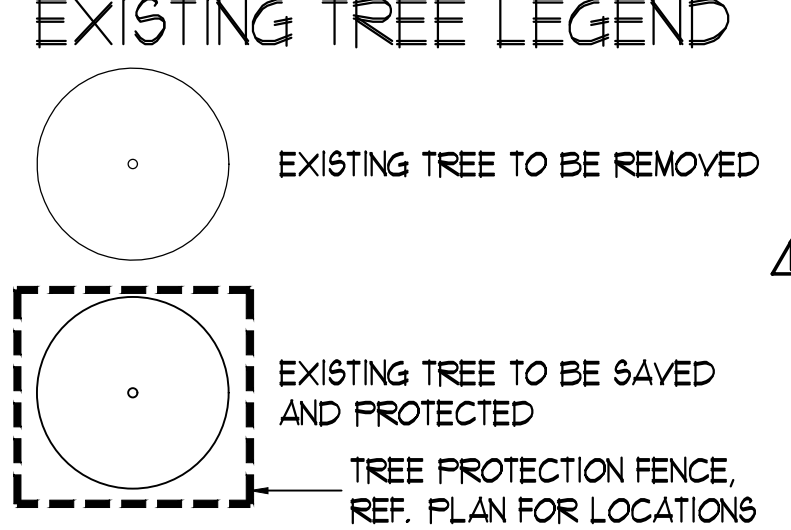


SITE TREES								
TAG	SIZE	SPECIES	MULTI-TRUNK SIZES (IN.)	SAVE/REMOVE	HERITAGE SAVED	SIGNIFICA NT SAVED	HERITAGE REMOVED	SIGNIFICANT REMOVED
100	11.5	CM	4X4X5X5	REMOVE				0.00
101	6	ELM		REMOVE				6.00
102	12	ELM		REMOVE				12.00
103	11	ELM		REMOVE				11.00
104	11	ELM		REMOVE				11.00
105	11	ELM		REMOVE				11.00
106	11	ELM		REMOVE				11.00
112	10	CM	4X4X4X4	REMOVE				0.00
116	8.5	ML	3X3X3X4	REMOVE				0.00
					0.00	0.00	0.00	62.00

FLOOD PLAIN TREES								
TAG	SIZE	SPECIES	MULTI-TRUNK SIZES (IN.)	SAVE/REMOVE	HERITAGE SAVED	SIGNIFICA NT SAVED	HERITAGE REMOVED	SIGNIFICANT REMOVED
107	9	ELM		SAVE		9.00		
109	11	OAK		REMOVE				11.00
110	17	ELM		REMOVE				17.00
111	8	ELM		SAVE		8.00		
					0.00	17.00	0.00	28.00

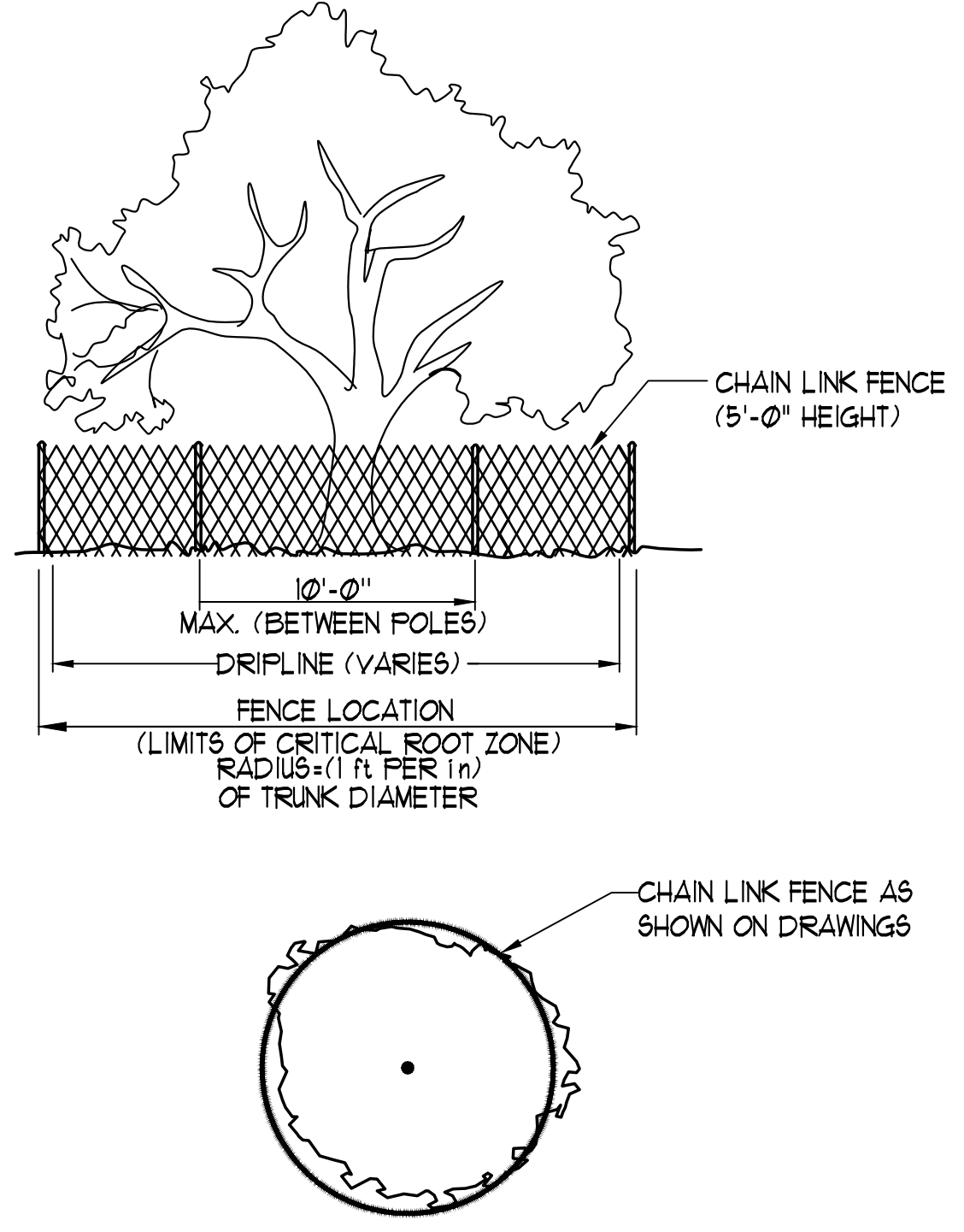
ESA TREES								
TAG	SIZE	SPECIES	MULTI-TRUNK SIZES (IN.)	SAVE/REMOVE	HERITAGE SAVED	SIGNIFICA NT SAVED	HERITAGE REMOVED	SIGNIFICANT REMOVED
108	18	OAK		REMOVE				18.00
113	14	ELM		REMOVE				14.00
114	14	ELM		REMOVE				14.00
115	14	ELM		REMOVE				14.00
					0.00	0.00	0.00	60.00

- EXISTING TREE CARE NOTES:
- CONTRACTOR SHALL EXERCISE EXTREME CARE WITH EXISTING TREES TO BE PRESERVED.
 - CHAIN LINK FENCE SHALL BE ERRECTED PRIOR TO ANY CLEARING, GRUBBING OR SITE WORK OF ANY KIND. FENCING SHALL STAY ERECTED UNTIL FINAL LANDSCAPE OPERATIONS COMMENCE.
 - ANY PRUNING TO PROVIDE CLEARANCE TO PRESERVED TREES SHALL BE APPROVED BY THE LANDSCAPE ARCHITECT PRIOR TO WORK. PRUNING SHALL BE DONE BY A CERTIFIED ARBORIST.
 - IF OBVIOUS DUST BUILD-UP FROM CONSTRUCTION ACTIVITY IS NOT REMOVED BY NATURAL RAINFALL, THE CONTRACTOR SHALL UTILIZE A WATER TRUCK TO WASH BUILD-UP FROM THE CANOPY. THE CAMPUS ARBORIST AND THE PROJECT LANDSCAPE ARCHITECT SHALL DETERMINE WHEN NECESSARY.
 - TREE ROOT CUTS SHALL BE MECHANICALLY CUT AT THE DIRECTION OF THE LANDSCAPE ARCHITECT AND SHALL BE DONE BY A CERTIFIED ARBORIST. CUTS SHALL BE CLEAN CUTS, WITHOUT PULLING OR TEARING. ALL CUTS SHALL BE PAINTED IMMEDIATELY. ROOT PRUNING SHALL BE DONE BY A CERTIFIED ARBORIST.
 - ANY REQUIRED WORK IN ROOT ZONE AREA WHERE ROOTS EXCEED 1" IN DIAMETER SHOULD BE DONE BY AIRSPADE, INCLUDING GRADING, LANDSCAPING AND IRRIGATION INSTALLATION. AN AIR SPADE SHALL BE USED IN AREAS WHERE A TRENCH IS REQUIRED ACROSS OR THROUGH THE ROOT ZONE. AIRSPADE ACTIVITIES SHALL BE DONE BY A CERTIFIED ARBORIST.
 - IF AIRSPADE IS NOT PRACTICAL FOR INSTALLATION OF UTILITIES OR OTHER WORK, CONTRACTOR SHALL BORE AT A MINIMUM OF 3' DEPTH TO ELIMINATE OPEN CUTS THROUGH ROOT ZONES. BORING ACTIVITIES SHALL BE DONE UNDER THE DIRECT SUPERVISION OF A CERTIFIED ARBORIST.
 - CONTRACTOR SHALL PROVIDE TEMPORARY IRRIGATION IN THE ROOT ZONE OF THE EXISTING TREES TO BE PRESERVED
 - TREES SHALL BE WATERED ONCE EVERY 1 TO 14 DAYS DURING CONSTRUCTION IF NATURAL RAINFALL IS LESS THAN 1/2 INCH.
 - TEMPORARY IRRIGATION SHALL REMAIN IN PLACE UNTIL PERMANENT IRRIGATION OPERATIONS COMMENCE.



TREE MITIGATION CALCULATIONS	
TOTAL CALIPER INCHES ON SITE	62.0
TOTAL HERITAGE INCHES	0.0
HERITAGE INCHES SAVED (100%)	0.0
HERITAGE INCHES REMOVED (0%)	0.0
REQUIRED PRESERVATION (100%)	0.0
REQUIRED MITIGATION (100%)	0.0
TOTAL SIGNIFICANT INCHES	62.0
SIGNIFICANT INCHES SAVED (0%)	0.0
SIGNIFICANT INCHES REMOVED (100%)	62.0
REQUIRED PRESERVATION (40%)	24.8
REQUIRED MITIGATION (100%)	24.8
TOTAL CALIPER INCHES IN FLOOD PLAIN	45.0
TOTAL HERITAGE INCHES	0.0
HERITAGE INCHES SAVED (100%)	0.0
HERITAGE INCHES REMOVED (0%)	0.0
REQUIRED PRESERVATION (100%)	0.0
REQUIRED MITIGATION (100%)	0.0
TOTAL SIGNIFICANT INCHES	45.0
SIGNIFICANT INCHES SAVED (31.8%)	17.0
SIGNIFICANT INCHES REMOVED (62.2%)	28.0
REQUIRED PRESERVATION (80%)	36.0
REQUIRED MITIGATION (100%)	19.0
TOTAL CALIPER INCHES IN ESA	60.0
TOTAL HERITAGE INCHES	0.0
HERITAGE INCHES SAVED (100%)	0.0
HERITAGE INCHES REMOVED (0%)	0.0
REQUIRED PRESERVATION (100%)	0.0
REQUIRED MITIGATION (100%)	0.0
TOTAL SIGNIFICANT INCHES	60.0
SIGNIFICANT INCHES SAVED (0%)	0.0
SIGNIFICANT INCHES REMOVED (100%)	60.0
REQUIRED PRESERVATION (80%)	48.0
REQUIRED MITIGATION (100%)	48.0
TOTAL REQUIRED MITIGATION INCHES	91.8
PROVIDED MITIGATION INCHES	95.5
SHADE TREES (5'x2')	10.0
SHADE TREES (3'x2')	35.0
SHADE TREES (4'x5')	27.5
SHADE TREES (2'x1')	2.5
ORNAMENTAL TREES (1.5'x9')	13.5
ORNAMENTAL TREES (3'x2')	6.0
ORNAMENTAL TREES (0.5'x8')	4.0
ORNAMENTAL TREES (2'x1')	2.0
REF. SHEET L1.0 FOR PROPOSED TREE LEGEND	

TREE MITIGATION SUMMARY	
TOTAL REQUIRED MITIGATION INCHES	91.8
PROVIDED MITIGATION INCHES	95.5
FULL CREDIT NEW TREES	18.0
(2) 5' BURR OAKS	10.0
(2) 3' TREE YAUPON	6.0
(1) 2' MOUNTAIN LAUREL	2.0
PARTIAL CREDIT NEW TREES (LESS 1.5')	11.5
(5) 5' BURR OAKS	11.5
(5) 6" SHUMARD RED OAK	22.5
(1) 4" CHINQUAPIN OAK	2.5
(5) 5' CEDAR ELM	11.5
(9) 3' TEXAS REDBUD	13.5
(2) 2' MOUNTAIN LAUREL	1.0
(6) 2' DESERT WILLOW	3.0



1 TREE PROTECTION FENCE SCALE: NONE

CITY OF SAN ANTONIO

LOCATION MAP

COLEMAN & ASSOCIATES

LANDSCAPE ARCHITECTURE
ENVIRONMENTAL DESIGN

8880 SILVER MOUNTAIN DRIVE
AUSTIN, TEXAS 78723
512/476-2090
FAX 512/476-2099

1928 CAMBRIA
SAN ANTONIO, TEXAS 78208
210/492-4550

05/05/22
Project No. 2148.00
CONTRACT DOCUMENTS

Tree Preservation Plan

L0.0